

A decorative pattern of hexagons in various shades of green and blue, arranged in a honeycomb-like structure on the left side of the slide.

Welcome!



**CAUSAL
PATHWAYS**

The Causal Pathways Initiative

Making visible the "black box" of philanthropic and systems change strategies, helping us collectively see how systems are (or are not) changing

An international network of evaluators, methodologists, philanthropic leaders, and more.

Focused on supporting philanthropy, other funders and their evaluation partners to open-up the black box of strategy and systems change by **building awareness, will, and skills to use evaluation approaches that can make sense of causal relationships** without depending on more traditional experimental and quasi-experimental approaches.

The Inclusive Rigour Framework

Looking for causality through methodological bricolage and iterative design

Welcome!

What do you associate with the word "rigour"?

Marina Apgar
Institute for Development Studies

Leslie Wingender
Humanity United

Helene Bradburn
Independent Consultant



Join at menti.com | use code 1802 4229

LATIN

OLD FRENCH

rigor

→ rigour

→ rigour

late Middle English

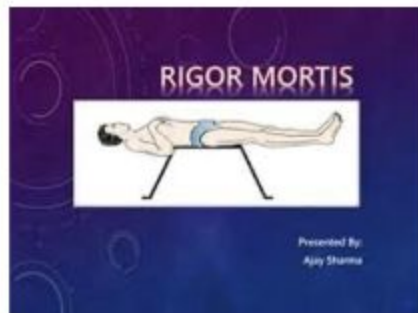
stiffness



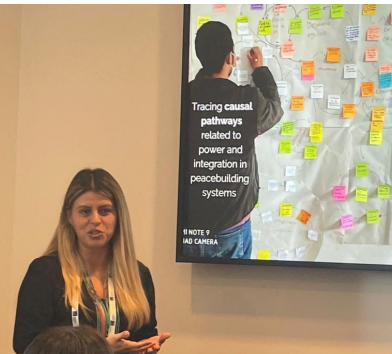
- Severity
- **Rigidity**
- Stringency
- Stiffness

Integrity; competence;
a way of demonstrating
legitimacy of the
process; the quality of
scientific method – the
precision.

- **Flexibility**
- Creativity
- Fun
- Messy

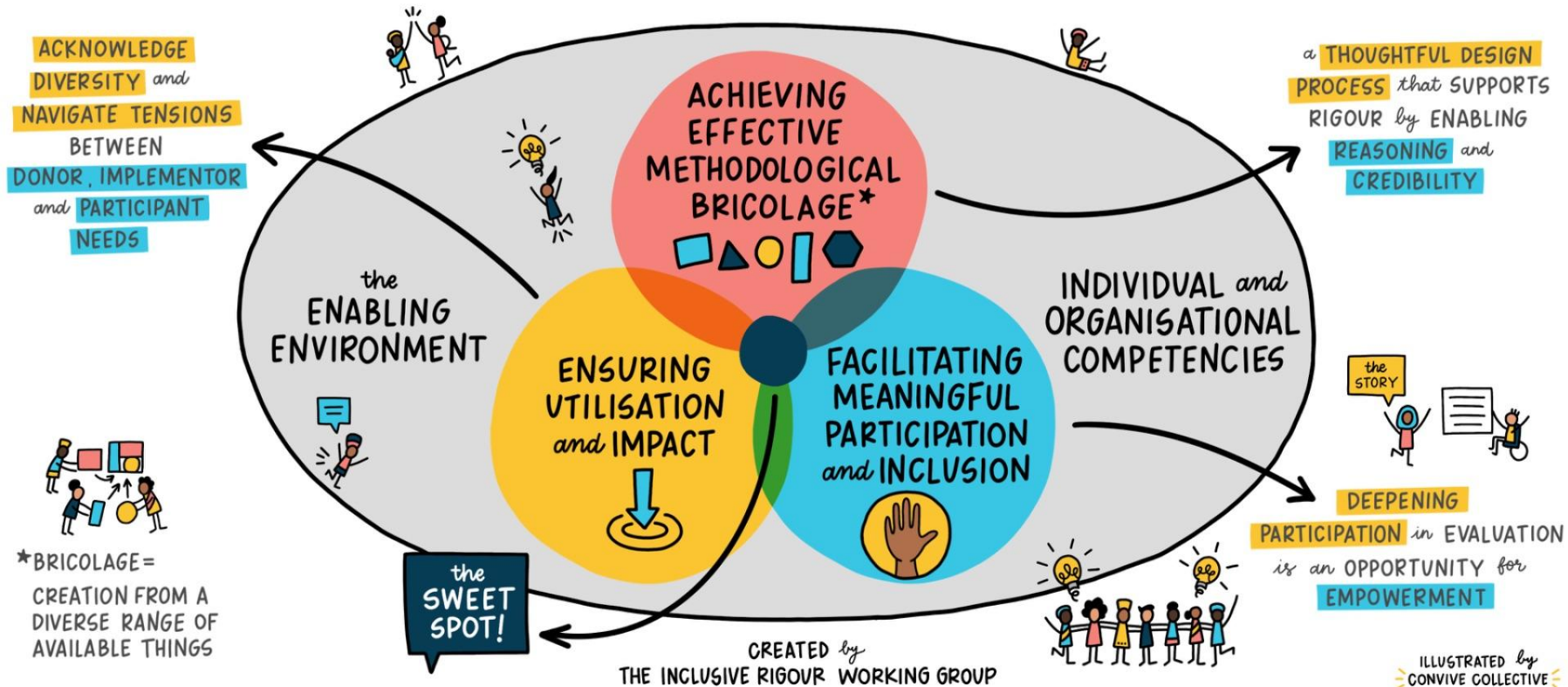


The Inclusive Rigour Co-Lab



the INCLUSIVE RIGOUR FRAMEWORK

it's a WAY of THINKING about RIGOUR that CENTERS PARTICIPATION and RESPONDS to COMPLEXITY

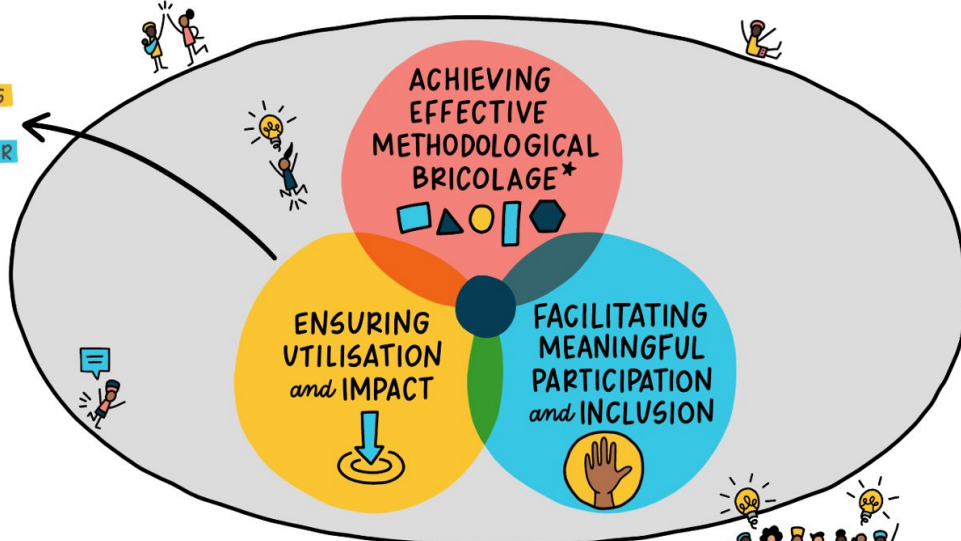


Ensuring utilisation and impact

the INCLUSIVE RIGOUR FRAMEWORK

it's a WAY of THINKING about RIGOUR that CENTERS PARTICIPATION and RESPONDS to COMPLEXITY

ACKNOWLEDGE
DIVERSITY and
NAVIGATE TENSIONS
BETWEEN
DONOR, IMPLEMENTOR
and PARTICIPANT
NEEDS



*BRICOLAGE=
CREATION FROM A
DIVERSE RANGE OF
AVAILABLE THINGS

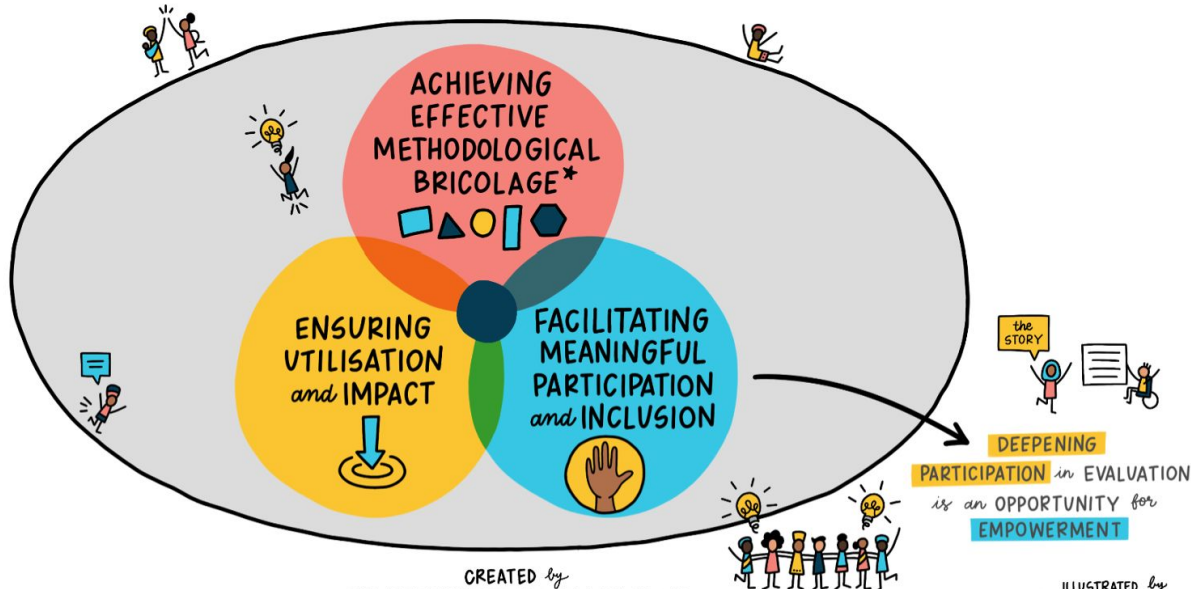
CREATED by
THE INCLUSIVE RIGOUR WORKING GROUP

ILLUSTRATED by
CONVIVE COLLECTIVE

Meaningful participation and inclusion

the INCLUSIVE RIGOUR FRAMEWORK

it's a WAY of THINKING about RIGOUR that CENTERS PARTICIPATION and RESPONDS to COMPLEXITY



*BRICOLAGE=
CREATION FROM A
DIVERSE RANGE OF
AVAILABLE THINGS

CREATED by
THE INCLUSIVE RIGOUR WORKING GROUP

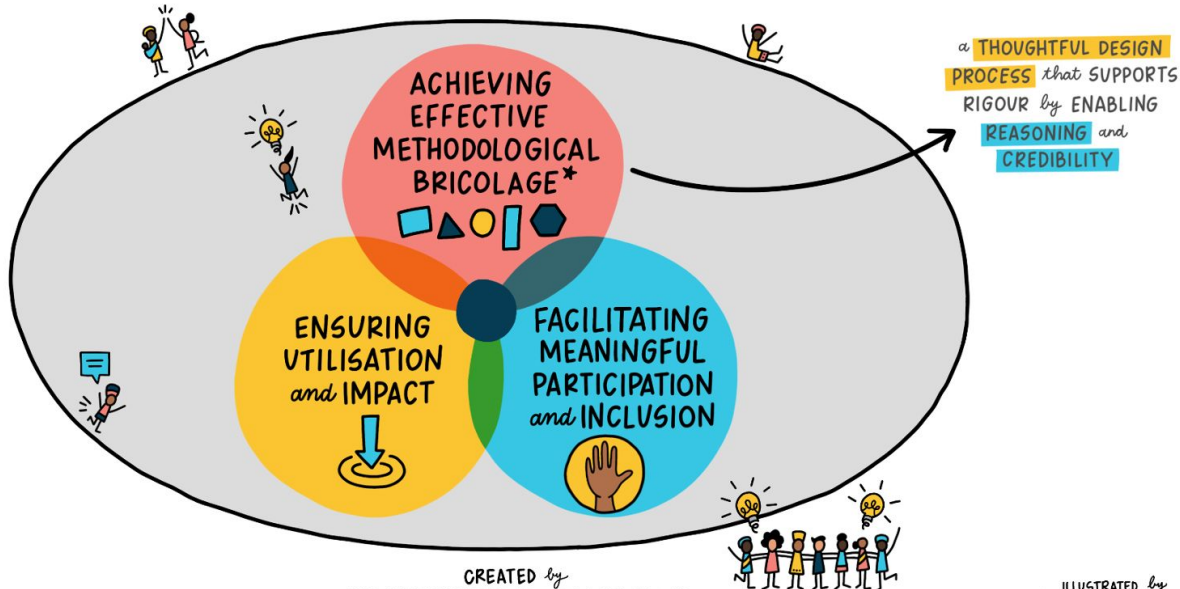
DEEPENING
PARTICIPATION in EVALUATION
is an OPPORTUNITY for
EMPOWERMENT

ILLUSTRATED by
CONVIVE COLLECTIVE

Methodological bricolage

the INCLUSIVE RIGOUR FRAMEWORK

it's a WAY of THINKING about RIGOUR that CENTERS PARTICIPATION and RESPONDS to COMPLEXITY



*BRICOLAGE =
CREATION FROM A
DIVERSE RANGE OF
AVAILABLE THINGS

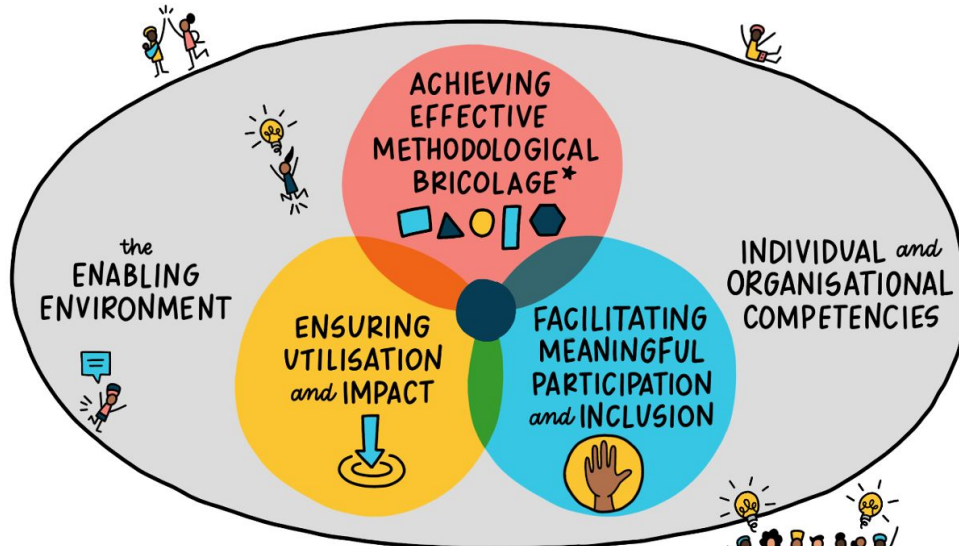
CREATED by
THE INCLUSIVE RIGOUR WORKING GROUP

ILLUSTRATED by
CONVIVE COLLECTIVE

The enabling environment

the INCLUSIVE RIGOUR FRAMEWORK

it's a WAY of THINKING about RIGOUR that CENTERS PARTICIPATION and RESPONDS to COMPLEXITY



*BRICOLAGE=
CREATION FROM A
DIVERSE RANGE OF
AVAILABLE THINGS

CREATED by
THE INCLUSIVE RIGOUR WORKING GROUP

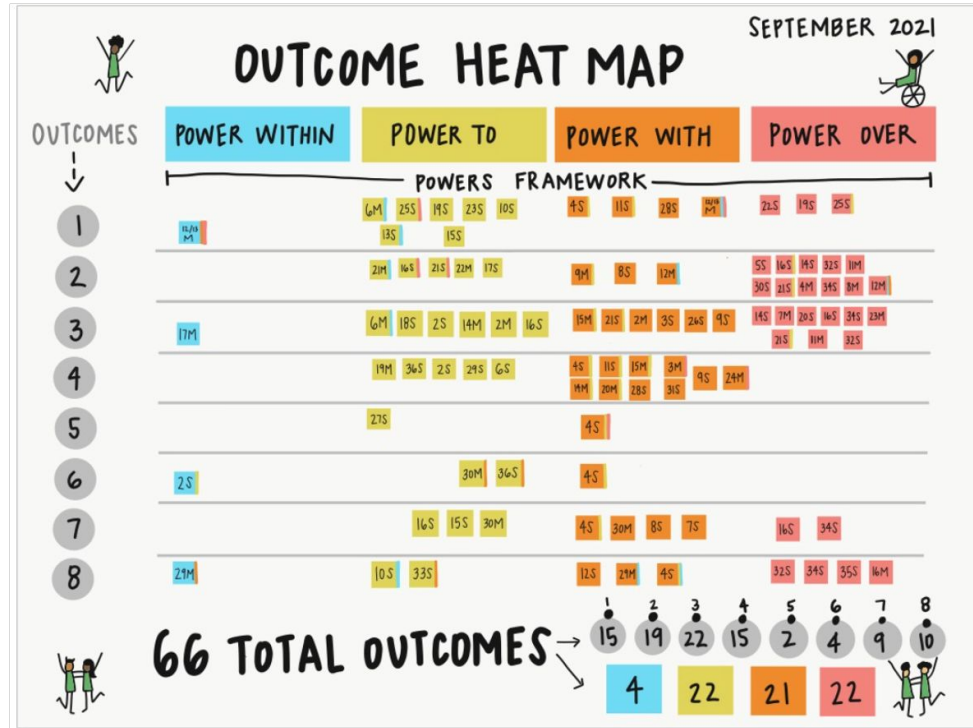
ILLUSTRATED by
CONVIVE COLLECTIVE

An example from philanthropy sector

The Humanity United Peacebuilding team asked **causal questions** as part of the peacebuilding strategy

We used **outcome harvesting** as a **monitoring tool** for the theory of change for our portfolio strategy

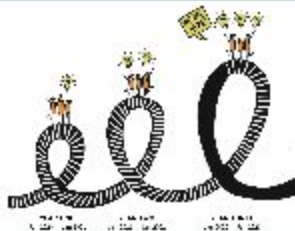
We held trimester reviews of our outcomes, looked at our pathways of change and reflected on our assumptions



10 KEY LEARNINGS

INTRODUCTION

The purpose of this document is to share the 10 key learnings that emerged under the past strategy. Over the last three years, the primary objective of our funding and partnerships was to support a transformed global peacebuilding system centered on the agency and power of local peacebuilders, with the potential for more enduring, resilient peace.



10 KEY LEARNINGS AND DATA SOURCES

Peacebuilding System & How Change Happens

1. We saw diverse forms of collective action emerge that had at least a short-term impact, demonstrating incremental change.
2. So far, we found that benefits to translocal networks are two-fold:
 - 1) Peer-to-peer learning sessions helped participating partners return to their context stronger
 - 2) Networks galvanized new forms of collaborative efforts.
3. We captured key moments of pushback from the peacebuilding system that illuminate the need for us and our partners to adapt to reach the desired change.
4. We found that organizational strength and capacity is crucial to systems change and that we need to evolve with our partners through their journeys, allowing for revised strategies.

How Our Partners Perceived Change

5. We have evidence that local peacebuilders and organizations have begun to perceive themselves as stakeholders in the global peacebuilding system.
6. We assumed that 'power within' was the beginning of the change process. However, we found more often that when partners took action (power to) or collaborated with others (power with), it was this joint action that itself led to a sense of power within.
7. We collected multiple examples of how peace actors cannot decide and act upon what peace should look like if they are burned out, traumatized, and/or exhausted.

DATA SOURCES

1. Outcome Harvest Story Capture (23 total)
2. Peacebuilding team learning sessions
3. 1:1 with partners
4. Grantmaking and partnership reflection sessions
5. Annual grantmaking reviews
6. Partner Feedback Summary report

Shifts In Our HU Power & Practices

8. Like many of our partners, we see ourselves and our power differently now.
9. We found that the diversity of funding mechanisms allows HU and our partners to be strategic at the right time.
10. The Humanity United Peacebuilding team has a deeper understanding of what it means to accompany local peacebuilders, and to build partnerships that favor local agency and power (Outcome 8).



Shifts In Our HU Power & Practices

8. Like many of our partners, we see ourselves and our power differently now.

9. We found that the diversity of funding mechanisms allows HU and our partners to be strategic at the right time.

10. The Humanity United Peacebuilding team has a deeper understanding of what it means to accompany local peacebuilders, and to build partnerships that favor local agency and power (Outcome 8).

Bricolage in action !

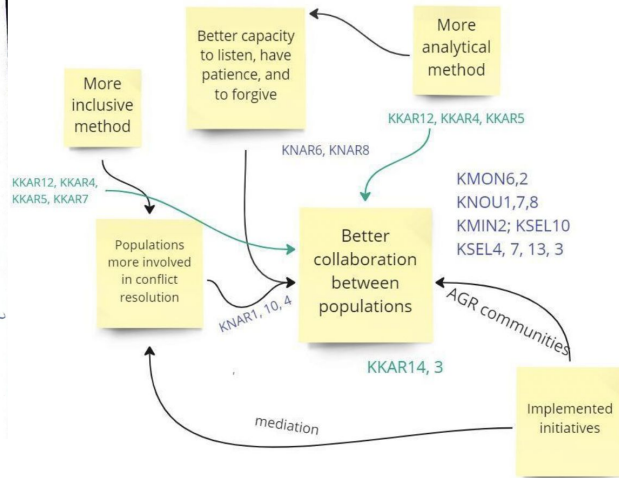
II. Description du changement

2.1. Quelle était la situation ou l'état avant ?

Avant l'arrivée du projet ici dans la commune de Kangalwa il y avait un certain nombre de conflits dont je ne t'ai pas écrit et j'ai vu aussi que dans certains villages ils existent des conflits internes depuis plusieurs années.

2.2. Qu'est-ce qui a changé ?

La prise de conscience des gens face aux conflits internes c'est à dire certaines populations ont compris l'importance de la consolidation de la paix dans leur inter communautaires.
 Prenons l'exemple sur la situation de Sakara, c'est après l'arrivée du projet que beaucoup de gens ont compris l'importance de la paix.



miro

Reflections from the Group

What are **challenges/opportunities** you might face when **applying this approach** in an evaluation, trying to explore causal pathways in complex settings ?



Join at [menti.com](https://www.menti.com) | use code 1802 4229

Breakout Groups

Donor community

Project implementers

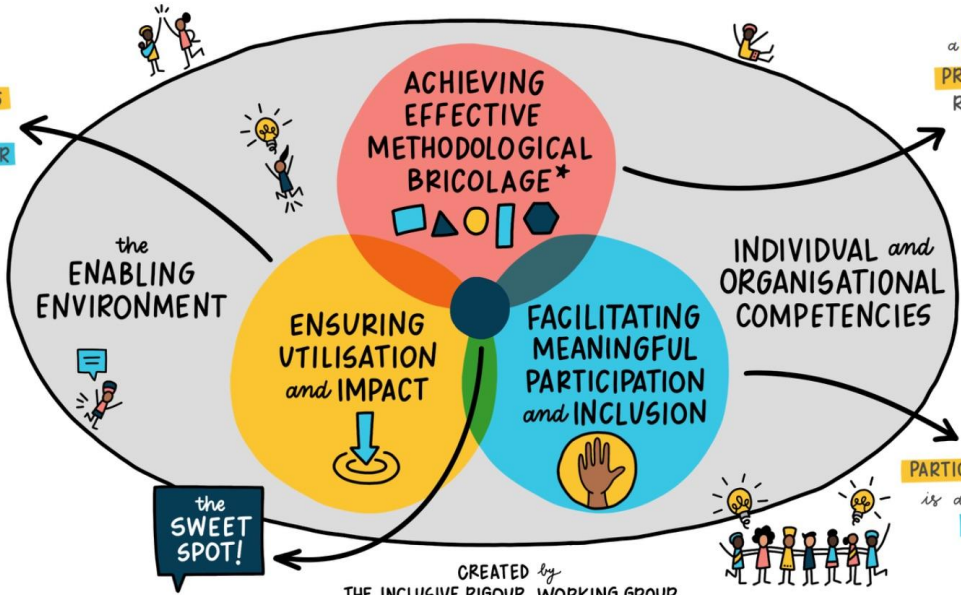
Evaluators

Group feedback

the INCLUSIVE RIGOUR FRAMEWORK

it's a WAY of THINKING about RIGOUR that CENTERS PARTICIPATION and RESPONDS to COMPLEXITY

ACKNOWLEDGE
DIVERSITY and
NAVIGATE TENSIONS
BETWEEN
DONOR, IMPLEMENTOR
and PARTICIPANT
NEEDS



a THOUGHTFUL DESIGN
PROCESS that SUPPORTS
RIGOUR by ENABLING
REASONING and
CREDIBILITY

DEEPENING
PARTICIPATION in EVALUATION
is an OPPORTUNITY for
EMPOWERMENT

*BRICOLAGE =
CREATION FROM A
DIVERSE RANGE OF
AVAILABLE THINGS

CREATED by
THE INCLUSIVE RIGOUR WORKING GROUP

ILLUSTRATED by
CONVIVE COLLECTIVE

Thank you!



WHERE DO WE GO FROM HERE?

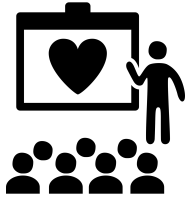
WE WANT
to HEAR
YOUR THOUGHTS!

PLEASE EXPLORE
our RESOURCES

JOIN *the* CONVERSATION
on

LinkedIn

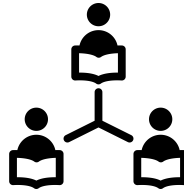
Resources from the Causal Pathways Initiative



Presentations & trainings to build understanding and will

American Evaluation Association

Available to attend other events by request



Resources to support understanding and action

Pending:
BetterEvaluation.com updated resource hub on causal pathways

Case studies to provide overall stories and more



Learning and acting together with support

Brain Trust to help funders work through tough questions with field experts

Pending: Peer learning spaces and early career support